



# AUCTION

LEADING THE INDUSTRY SINCE 1945

SATURDAY – JUNE 15, 2019 – 9:30 AM

## Herman & Jackie Casto

FARM EQUIPMENT – BEEF CATTLE – LOADS OF FARM PRIMITIVES – ANTIQUES – 100 CAST-IRON IMPLEMENT SEATS – TOYS – PEDAL TRACTORS – 10 ANVILS

Having suffered the loss of her husband, Jackie will sell the following at absolute auction, all sells to the highest bidders on location:

**891 TOPE RD., NEW CUMBERLAND, WV., 26047**

Directions: Take Rt. 168 south of Rt. 30 to Hardins Run Rd. and west to Tope or from Rt. 2 in New Cumberland take Sedwick east to Harding Run and east to Tope Rd. Watch for KIKO signs.



**(10) Anvils – (30) Antique Corn Shellers – (100) Cast-Iron Seats – (6) Pedal Tractor – (50) Milk Cans:** (10) anvils of various sizes – approx. 100 cast-iron implement seats including Empire, Akron, Walter Wood, Buckeye, Tiger, IWH, Whitney, McCormick, etc. – several pedal tractors including IH 1066, White 5, Ford 7740, 4 JD Murray – several platform farm scales – several hand corn shellers, wood, steel, small hand crank box-type, etc. – dozens of old metal toy trucks, firetrucks, tractors – 4 dozen milk cans – railroad and barn lanterns – dozen crocks and jugs – wood and steel beam plows – draw knives – scythe – monkey wrenches – balance scales – pulleys – sausage grinders – HD slip scoop – iron wheels – cherry pitter – sleds – hand cultivators & planters – old baskets – horse collars – potato plow – hay forks – grapple forks – flat pulleys – ice tongs – early wooden washer with wringer – records – books – trunks – lots of industrial farm iron – potbelly stove – 20 gal. crock – 5 gal. crocks – jugs – Blue flower 2 handle crock “Weaver” – coffee grinders – 2 dozen plus cast iron skillet – glass chicken waterers – Aladdin oil lamp – custard oil lamps – ice tongs – brass machine oilers – Fenton 1971 #636 silver dollars plate – loads canning jars – ammo box and 12 ga shot gun shells – oak hall seat mirror – oak dresser – metal firetruck – roller – sev. dozen Tonka metal toys of all kinds – chalk carnival dogs – sad irons – children’s books – costume jewelry – banjo – guitars

Information is believed to be accurate but not guaranteed.



330.455.9357 • [kikoauctions.com](http://kikoauctions.com)



**Tractor & Equipment:** Zetor 5245 MFWD tractor – Farmall Cub with all attachments – Case CVA tractor with Eagle hitch – 2 btm Case plow – NI 272 7' cutditcher – ZTR 205 3 pt. disc mower - JD dolly wheel hay rake – NH 15 2-star 3 pt. tedder – JD 336 sq. baler – NH 848 round baler – 3 pt. cone spreader – 3 pt. log splitter – JD 2R 3 pt. corn planter – JD pull-type PTO corn sheller – 10' trans disc – drag disc and springtooths – trailers – flat-bed wagons – JD 3 btm 3 pt plow – JD 45 SP combine – NH sq. baler – Cat D4 dozer with straight blade, HD 6 track chains – 3 pt. post-hole digger – NH 125 single-beater manure spreader – trans. disc – cultipacker – hammermill – 3 pt. 6' finish mower – Troy-Bilt tiller – 3 pt. hyd. splitter – spot welder – Delta 12" planner – Porta Cable upright air compressor – sand blast cabinet

**Angus & Angus Cross Beef Cattle:** 7 cows most should have calves by sale or shortly after.

**Tools – Planner – Sawmill – Etc.:** Drill press – Ind. 20" wood planner – Delta 12" planner - 2 jointers – radial arm saw – small metal lathe – old wood lathe saw combination – handyman jack – miter saw – 56" sawmill & blade – carriage, wood needs rebuilt – assorted hardwood lumber – 2-cyl. Wisc. engine – hyd cylinders – 12V ATV sprayer – old WB saw blade mower – post vise – iron – hardware – old electric motors – lots of old farm iron and hardware – old bicycles – saw blades – welder – power tools – chainsaws – nat. gas furnace & duct – 1957 Craftsman Sears with deck and blade – blacksmith tools – early Hornet swivel chainsaw

**Lumber:** Several 1000 ft. rough-cut lumber mostly 1", some 2", several species

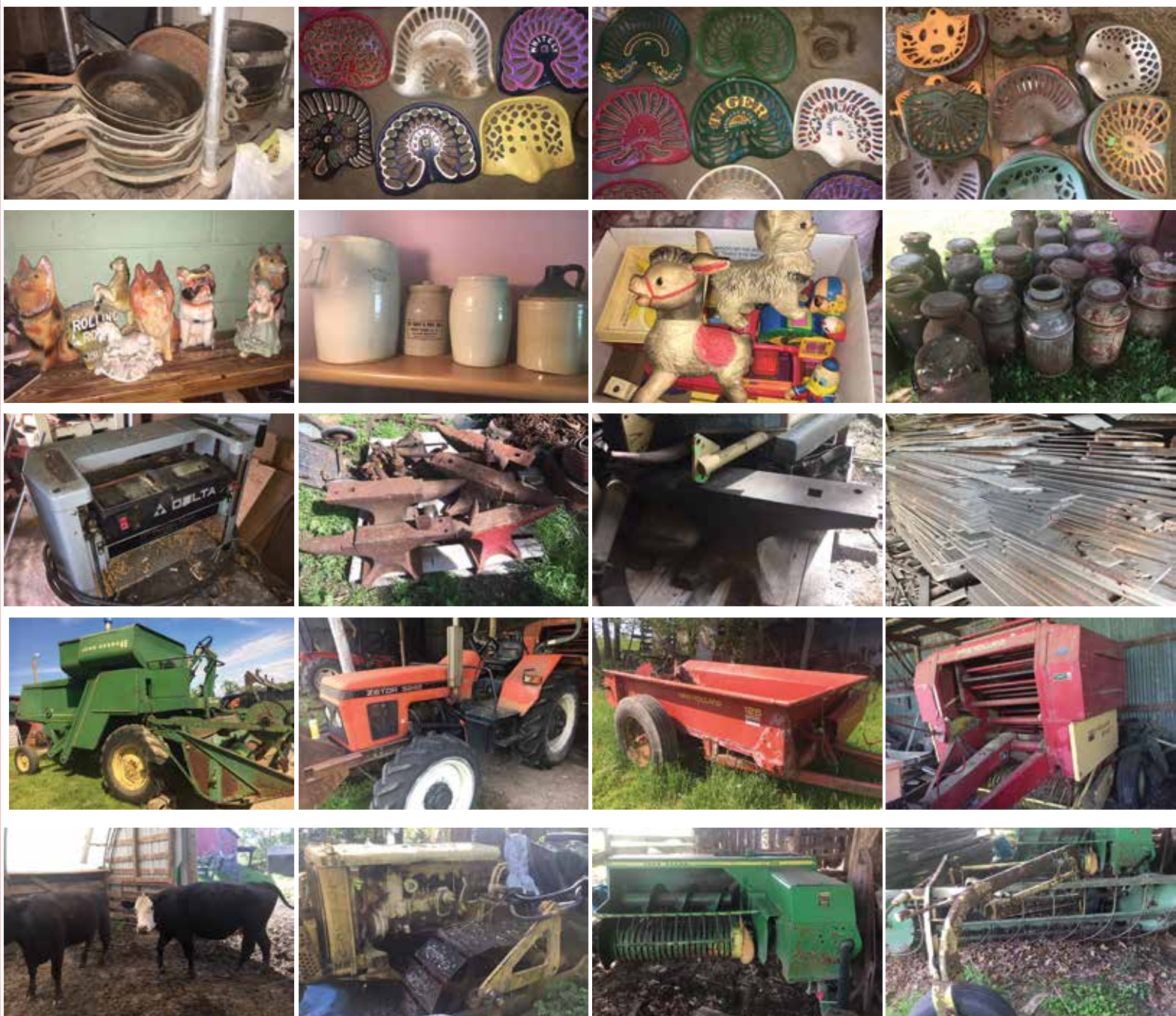
**Sale Order:** Antiques, tools first – tractor and cattle approx. 12 PM. Something for everyone. Herman collected for years and threw nothing away. Join us! Preview Friday, June 14, 2:00-5:00 PM.

**TERMS ON CHATTELS:** Driver's license or State ID required to register for bidder number. Cash, Check, Debit Card, Visa, or Master Card accepted. 4% buyer's premium on all sales; 4% waived for cash or check. Information is believed to be accurate but not guaranteed. Multi Par auction process may be used.

**Auctioneer/Realtor:**

Russell T. (Rusty) Kiko, Jr., C.A.I., ext 115, 330-495-0923 and Rudy W. Kiko, 330-540-2416

**Auction By Order Of:** Jackie Casto



Auctioneer/Realtor®  
**RUSSELL T. (RUSTY) KIKO, JR.**  
 330.495.0923  
 rustykiko@kikocompany.com



Auctioneer/Realtor®  
**RUDY W. KIKO**  
 330.540.2416  
 rudykiko@kikocompany.com



**330.455.9357 • kikoauctions.com**

